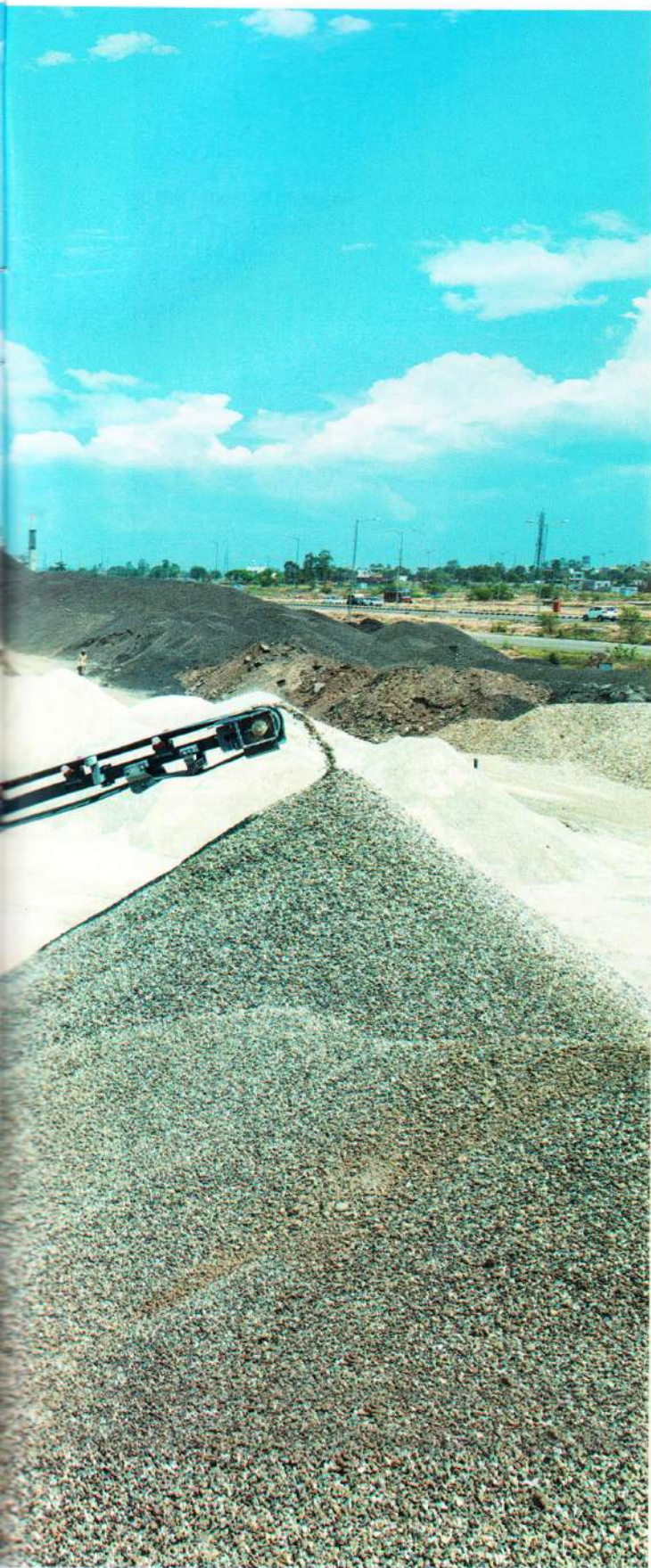


GETTING BACK ITS MOJO

Crushing and screening happens in remote locations. Few notice. However, they are elaborate operations at the core of construction

BY MOLLY R





▲ A Kleemann machine at work.

Does without saying that the pandemic did bring life to a screeching halt. It also brought down businesses who were not dealing into essential commodities. However, with the need to get the economy back on track, it's necessary that the government begin with restarting infrastructure projects. Setting the wheels in motion will see a slow improvement for equipment.

OEMs, on their part, are working even more closely with contractors and customers today. All the while, they were advising their customers on ways to maintain their machines during the lockdown. However, going forward, most of them are expecting many of the old practices to change.

Piero Guizzetti, CEO, MB Crusher India, says, "We believe that the prevalent practice of manual crushing will decrease significantly going forward. With the need to quickly resume onsite execution as the economy picks itself back up, private contractors will try to ensure timely completion of their proj-



OUR APPLICATION
EXPERTISE HELPS OUR
CUSTOMER AT THE SITE
LEVEL TO INSTALL AN
EFFECTIVE DUST SUPPRESSION
SYSTEM.

RAMESH PALAGIRI

ects and our machines fit well with such timebound, mobile and operationally demanding requirements."

For MB India, it is important to understand its contractors' specific requirements in terms of productivity and find solutions that fit their operational and financial objectives. They also carefully consider workloads of the clients, to ensure that maximum utility is planned for any investment they make.

The need to understand clients is even more important now than ever before. Most people are confused about the future and what it will bring. **Raj Shrivastav, executive in-charge, crushing & screening, TIL,** says, "We offer our equipment & solutions to exactly match the customer requirements. Our plants are robustly built and designed to achieve the promised performance. As a company, we are committed to extending full technical support throughout the lifecycle of our equipment."

A company like Wirtgen Group India prefers to list exact

specifications that clients need. **Ramesh Palagiri, MD & CEO, Wirtgen Group India,** says, "At Kleemann, we first understand our customer's scope of work based on the following: Total aggregate requirement in a given timeline; ratio of different aggregate fraction; and distance between site, plant and quarry. And then appropriate solution from our complete range of track mounted C&S plants."

STAYING IN TOUCH

While the current situation has brought the economy to a halt, it is not unique to India--the global economy also needs to find a way forward. With the various reforms announced by the government for the infrastructure sector, there is a general feeling that economic activity will gradually start moving again and once momentum is gained will grow at impressive rates to make up for lost time. Guizzetti says, "Throughout the pandemic, we have been in constant touch with all clients. We have worked with them in a manner that is both sensitive to the constraints faced, but also proactive as we look forward to resumption of construction activity and ensure that MB becomes a competitive advantage for them. Our pipeline is as healthy as ever as customers became curious to explore



▼ The BF90.3 was the first crusher bucket to be made in the world.



▲ The MB-S18 screening bucket has been designed for medium and large-scale contexts that require high performance and large-scale production.

new technologies during this time, and our delivery schedule merely protracted by the lockdown. We always keep a very healthy buffer in India as it is one of our most important markets in the world."

The lockdown affected people in different ways. While some continued to work as before (except the lack of travel), it disheartened others in more ways than one. Shrivastav says, "The past months have been game changers. Customers have set tighter time frames to quickly get back on track and make up for the time lost. We have also accordingly aligned our production and partner base to ensure speed of delivery for the backlog of orders that we now have to fulfil."

Reopening plants is a concern for manufacturing companies. For instance, Wirtgen India's Pune plant manufactures screens for the world market and is the biggest exporter from India. "We have planned our inventory accordingly to meet the revised demand for Kleemann screens for the global requirement. Same is applicable to our plant in Goppingen, Germany, where the crusher range of Impactor, Jaw & Cone are produced. We have adjusted our production plan accordingly at both plants," says Palagiri.

INNOVATIONS GALORE

Dust is an inevitable consequence of crushing. Whatever the technology, machine or brand. Material has a large say in the amount of dust that is generated. "With this understanding, our patented jaw technology helps minimise dust with a unique motion studied to ensure optimal impact on the material. We also have auxiliary items which suppress the dust that is being generated while crushing. Also, the weight distri-



WE BELIEVE THAT THE PREVALENT PRACTICE OF MANUAL CRUSHING WILL DECREASE SIGNIFICANTLY GOING FORWARD."

PIERO GUIZZETTI

bution of our machines has been further enhanced to further improve on our leading stability and minimal vibration on the primary equipment," says Guizzetti.

Kleemann machines have been provided with on-board high pressure dust separation system as an option, which controls dust to almost 90%. "Our application expertise helps our customer at the site level to install an effective dust suppression system. Availability of water is a major hurdle at several job sites," says Palagiri.

Kleemann Crushers of the EVO series have advanced features like the CFS – Continuous flow system where all the plants in line are interconnected and recently it has introduced the SPECTIVE Control system for all EVO series machines which is a reliable intuitive control technology without



▲ The advantages of a high frequency screen include higher production capabilities with more efficient sizing.



▲ TIL H3244 PP is a wheel mounted electric powered primary crushing & screening unit.

lengthy instructions. In this the operator is guided step-by-step through the starting process. The start screen provides a graphical view of the complete plant with all adjustable functions at a glance. When the desired function is selected, clear instructions guide users through all operating steps. If a fault occurs, a fault diagnosis appears on the display. Fault localisation, description and the remedy tips appear which result in reduced downtime.


The impressive hardware includes the new user interface



CONTRACTORS
WILL START FACING
NEW TIMEFRAMES
FOR PROJECTS

AND WE NEED TO GAUGE THEIR
REQUIREMENTS BEFORE OFFERING
THE RIGHT PLANT.

RAJ SHRIVASTAV

with a 12" touch panel. The panel is not sensitive to dust, is splash-proof and can be operated at the touch of a finger, pen, tool or even gloves. It is also very easy to read in direct sunlight with its brightness and contrast settings. Due to the simple operating concept, the user can also operate the crushing plant without any prior knowledge and extensive explanations. 



MOBISCREEN EVO SCREENS IN ACTION

The MOBISCREEN EVO line are successful all over the world

The Mobile Screens: **MADE IN INDIA**

Manufactured by The WIRTGEN GROUP in India, to be precise in the local production and assembly plant in Pune, the mobile screening plants in the MOBISCREEN EVO line are successful all over the world. The machines are classifying screens, which means that they classify the rock after it has been crushed by KLEEMANN crushing plants, sorting it into up to three aggregate fractions (MS 702 EVO and MS 952 EVO plants with two screen decks) or up to four aggregate fractions (the 703 and 953 plants with three screen decks). Using various screen surfaces, the plants are ideal for a wide range of applications, for instance for classifying granite, basalt, iron ore or limestone. Other highlights of the MOBISCREEN EVO line include a large feed hopper with vibration for prescreening, an easy-to-operate mobile control panel and a fully automatic process control system.

Top performance in open cast applications

The screens make a particularly valuable contribution in their "home market", however. There is hardly another region anywhere in the world with a more dynamic road construction industry than India. When constructing roads, it is particularly important to have a supply of crushed aggregate in precisely defined grain sizes. KLEEMANN plants also perform invaluable services in open cast applications. This is being demonstrated by 4 MOBISCREEN EVO plants of the MS 952 EVO and MS 953 EVO types in Keonjhar in the state of Odisha. KLEEMANN technology is sustainably boosting productivity and



efficiency at an iron ore extraction site operated by its customer Kalinga Commercial Corporation Limited (KCCL). "At present, we are operating 4 plants for 18-20 hours a day. And we are getting high production levels from all 4 plants," says Shri Kumar, project manager at KCCL.

For further information, please contact:

WIRTGEN INDIA

Phone: +91 2117 302600/ +91 20 67682600

Customer Care No: 1800 - 267 - 2600

E-Mail: Sales.india@wirtgen-group.com

Internet: <http://www.wirtgen-group.com/india>